

WOMEN IN LEADERSHIP

Improve Your Management and Performance Outcomes



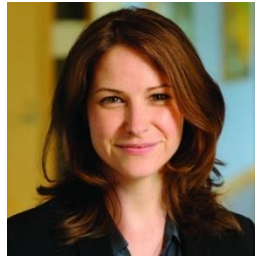
More women occupy positions of leadership in today's business world than ever before. However, women continue to face unique challenges that delay or stall their career advancement.

Women in Leadership: Approach and Impact examines those barriers most common to women's career progress, along with strategies to manage those obstacles. This course also identifies the critical skills needed to lead and influence at work, both for established women leaders and those aspiring to leadership positions.

Through exercises, discussion, and case studies, participants gain skills in influencing others, negotiating, and leading groups and teams. Also examined are strategies to build a network of career growth and nurturing healthy and diverse workplaces.

FACULTY

Colleen Stuart is an Assistant Professor of Management at the Johns Hopkins Carey Business School with expertise in the areas of collaborative work, social networks and diversity. She holds a PhD in Organizational Behavior from the University of Toronto. Her research has been published in several academic journals, such as Organization Science and The Academy of Management Journal, as well as featured in The New York Times, The Financial Times, and The Huffington Post.



In support of improving patient care, this activity has been planned and implemented by the Postgraduate Institute for Medicine and Johns Hopkins Carey Business School. Postgraduate Institute for Medicine is jointly accredited by the Accreditation Council for Continuing Medical Education (ACCME), the Accreditation Council for Pharmacy Education (ACPE), and the American Nurses Credentialing Center (ANCC), to provide continuing education for the healthcare team.

WHO SHOULD ATTEND

- Women professionals working as supervisors, managers, directors, or leaders of small businesses
- Rising female managers who want to improve management performance and outcomes
- Individuals looking to overcome roadblocks for women in leadership

TUITION

\$3,800 for the 3-day course

20% discount to JHU and JHHS employees \$2,560

JHU employees may use tuition remission for the seminar

LOCATION

Baltimore Harbor East

WOMEN IN LEADERSHIP

Course Agenda

DAY 1

8:30AM-9:00AM

REGISTRATION AND BREAKFAST

9:00AM-12:00PM

(Including a Coffee Break)

MORNING SESSION: Introduction to Women at Work

- Learn about the challenges facing women at work and develop strategies to navigate them

12:00PM-1:00PM

LUNCH AND AFTERNOON PREPARATION

1:00PM-4:00PM

(Including a Coffee Break)

AFTERNOON SESSION: Leading Teams

- Learn to manage team processes and decision making

DAY 2

8:30AM-9:00AM

BREAKFAST

9:00AM-12:00PM

(Including a Coffee Break)

MORNING SESSION: Negotiation

- Learn to think about negotiation and develop strategies for claiming and creating value

12:00PM-1:00PM

LUNCH AND AFTERNOON PREPARATION

1:00PM-4:00PM

(Including a Coffee Break)

AFTERNOON SESSION: Strategic Social Networks

- Learn about the networks of leaders and how to build your network for advancement

DAY 3

8:30AM-9:00AM

BREAKFAST

9:00AM-12:00PM

(Including a Coffee Break)

MORNING SESSION: Influence

- Learn to use allies and persuasion to influence others

12:00PM-1:00PM

LUNCH AND AFTERNOON PREPARATION

1:00PM-4:00PM

(Including a Coffee Break)

AFTERNOON SESSION: Interventions and Ethical Perspectives on Equity

- Learn about organizational level interventions to promote diversity